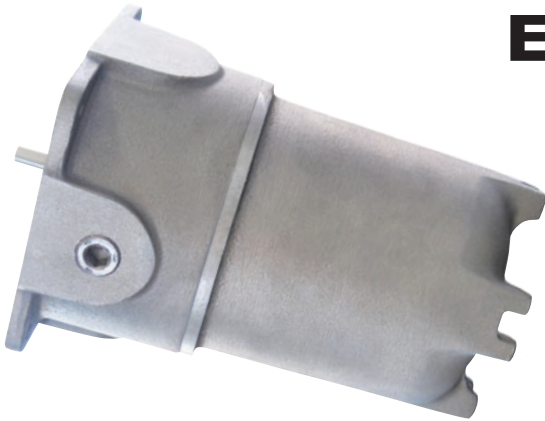


# Explosion Proof Resolver



**1986**

**XP**

**1**

**GR50**

Mounting Configuration and Shaft Size	
XP	4.50" square mounting 3/8" input shaft

Resolver Electrical Output Characteristics	
1	Standard output compatible with all Gemco electronic modules. Resolver No. 04535001
2	Special output compatible with AMCI resolver input devices. Resolver No. 04535076
3	Special output compatible with GE axis positioning modules. Resolver No. 04535044
4	Special output compatible with Modicon motion cards. Resolver No. 04535051
5	Special output compatible with Reliance resolver input card. Resolver No. 04535023
6	Special output compatible with Namco resolver input card. Resolver No. 04535053

Single/Multi-Turn	
X	Single turn resolver. No gear reducer.
GR_	Single turn resolver with internal gear reducer. Select ratio from list below, insert after GR.
GM_	Single turn resolver with internal gear multiplier. Select ratio from list below, insert after GM.
D1	64 turn dual resolver.
D2	128 turn dual resolver.

Single Resolver Gear Reducers			
1.5:1	14:1	42:1	128:1
2:1	15:1	48:1	150:1
3:1	16:1	50:1	160:1
4:1	17:1	54:1	180:1
4.75:1	18:1	58:1	200:1
5:1	19:1	60:1	210:1
6:1	19.5:1	64:1	225:1
6.15:1	20:1	65:1	250:1
7:1	21.66:1	70:1	270:1
7.5:1	23:1	73:1	310:1
7.625:1	24:1	75:1	350:1
8:1	25:1	80:1	360:1
9:1	30:1	90:1	400:1
9.2:1	31.25:1	91:1	500:1
9.5:1	35:1	100:1	520:1
10:1	38:1	115:1	
12:1	40:1	120:1	

**Certifications:**

- UL Listed E10493
- CSA Certified LR27991

**Compliance:**

- NEC Class I, Division I, Groups C & D, Class II, Groups E, F & G
- UL Standard 886
- CSA Standard C22.2 No. 30

All resolver wiring is taken to a terminal strip inside the housing and is accessible through a 1/2" - 14 NPT conduit opening.

